

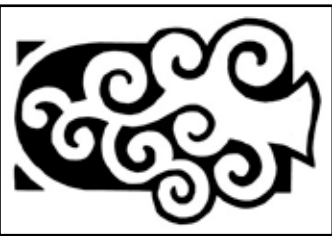
# MINI HOLIDAY TREE

Pacific Rim Quilt Company

Finished Size: 11" x 17"

© Nancy Lee Chong 10/2009

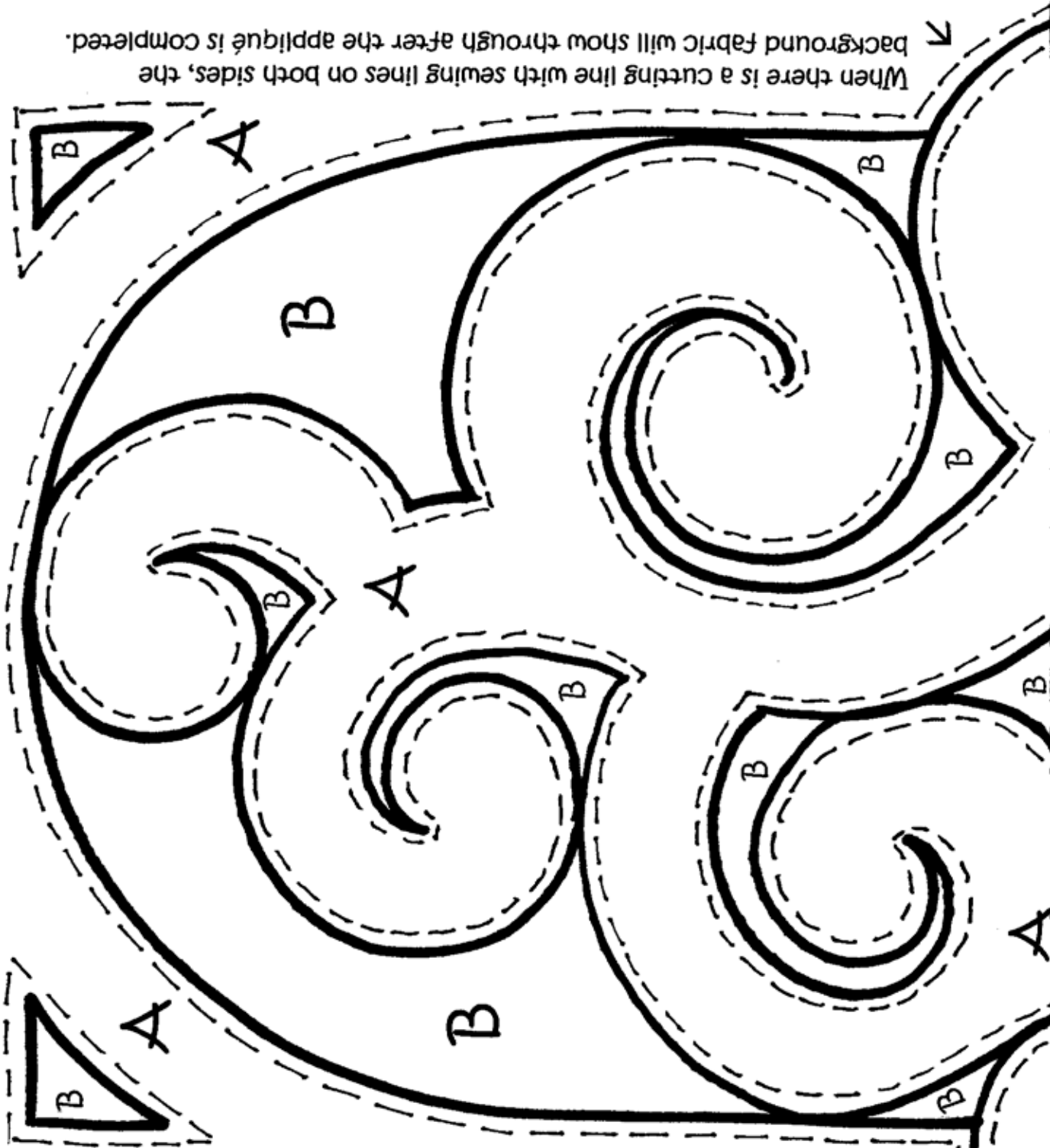
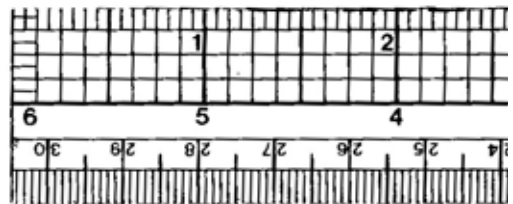
Light applique on dark



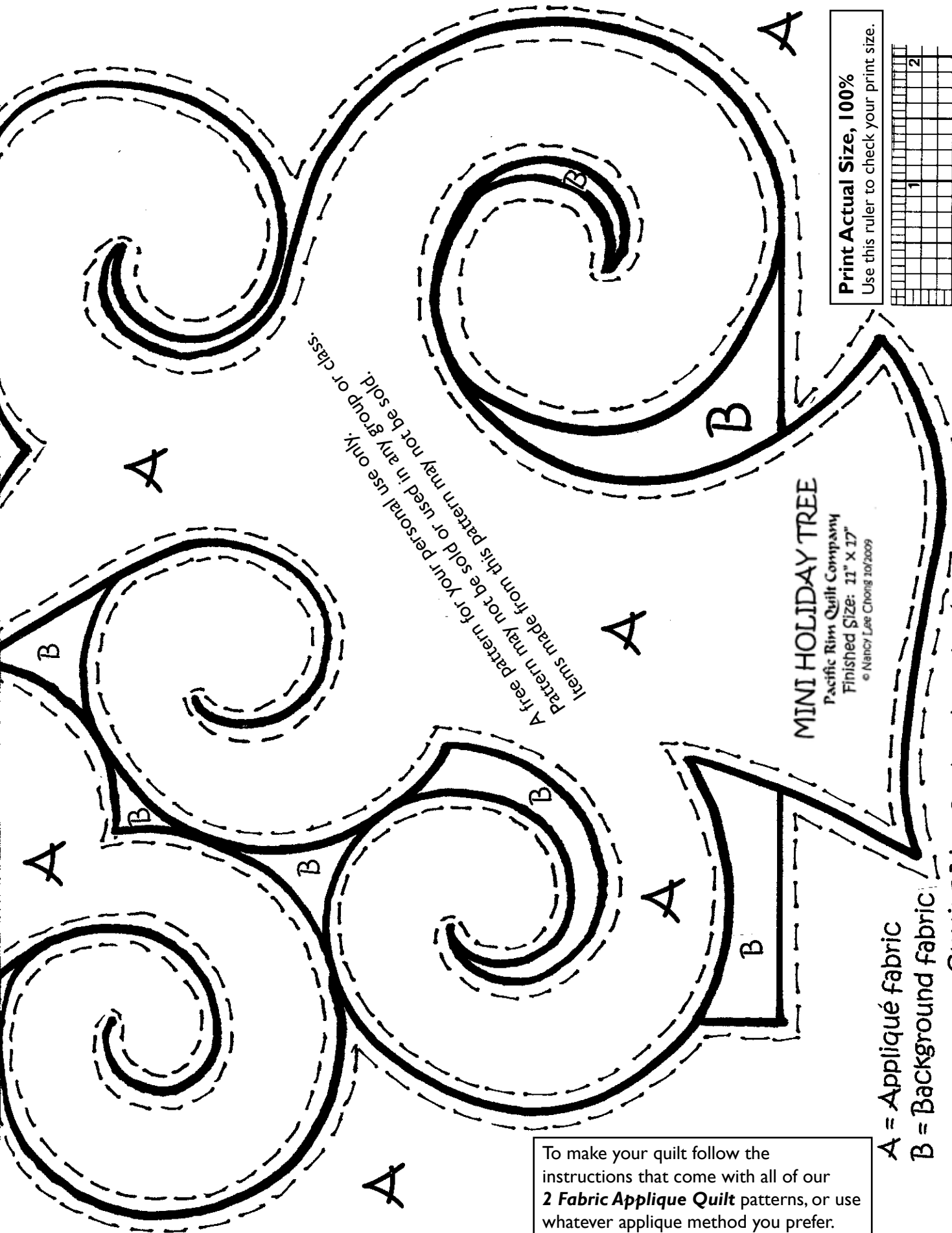
Dark applique on light



**Print: Actual Size, 100%**  
Use this ruler to check your print size.



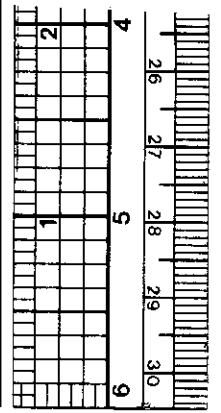
When there is a cutting line with sewing lines on both sides, the background fabric will show through after the applique is completed.



A tree pattern for your personal use only. Pattern may not be sold or used in any group or class. Items made from this pattern may not be sold.

MINI HOLIDAY TREE  
 Pacific Rim Quilt Company  
 Finished Size: 11" x 17"  
 © Nancy Lee Chong 10/2009

Print Actual Size, 100%  
 Use this ruler to check your print size.



To make your quilt follow the instructions that come with all of our **2 Fabric Applique Quilt** patterns, or use whatever applique method you prefer.

- A = Applique fabric
- B = Background fabric
- Cutting Line for hand applique
- - - - Sewing line for hand applique - or -
- Cutting line for fusible and machine applique.